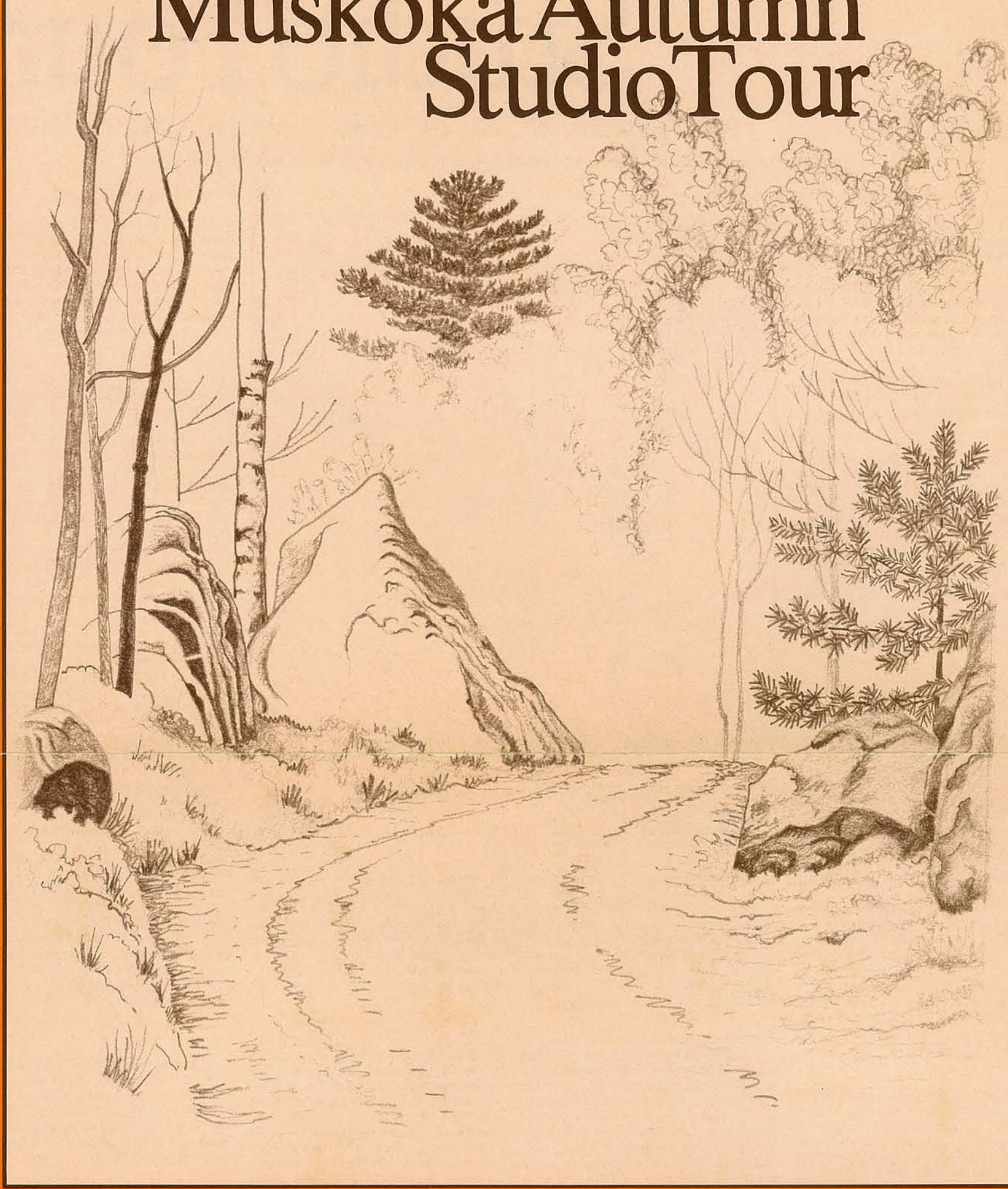


8th Annual

Muskoka Autumn Studio Tour



8th Annual

Muskoka Autumn Studio Tour

Saturday, Sunday and Monday
September 27, 28 & 29, 1986
10 a.m. to 6 p.m.

An opportunity for you to visit the artists of Muskoka and see their work in the context of their studios

8th Annual

Muskoka Autumn Studio Tour

OPEN HOUSE

SEPTEMBER 27, 28, 29, 1986

10 A.M. TO 6 P.M.

You must supply transportation, but start and end this FREE tour where you like.

For your own or extra copies of this brochure send a stamped self-addressed envelope to: Muskoka Autumn Studio Tour, Box 1368, Gravenhurst, Ontario, P0C 1G0

A. The Artisan's Gallery, Wayne Church's metal studio, offers distinctive one-of-a-kind sculptures and unique forged furnishings and accessories. Located on west side of Hwy. 11; northbound, turn back 3 km. from Sparrow Lake Route D overpass; southbound, 15 km. from Gravenhurst. Box 88, Severn Bridge, POE 1N0 (705) 689-6121.
Hours: May to Dec., Mon. - Sat. 10 - 5, Fri. 10 - 9, Sun. 2 - 9, closed Wed. Jan. to April by appointment.

B. Muskoka Palm Studio, David Wilcox renders traditional and contemporary designs in stained glass including sandblasted and kiln fused glass pieces. Studio is located on the west side of Hwy. 11 at the corner of Muskoka Road 19. Southbound, 6 km. south of Gravenhurst, northbound, exit Sedore Rd. overpass and turn back 2 km. on Hwy. 11. R.R. 1, Gravenhurst, P0C 1G0 (705) 687-6942
Hours: 10 a.m. to 6 p.m. daily, closed Wednesday.

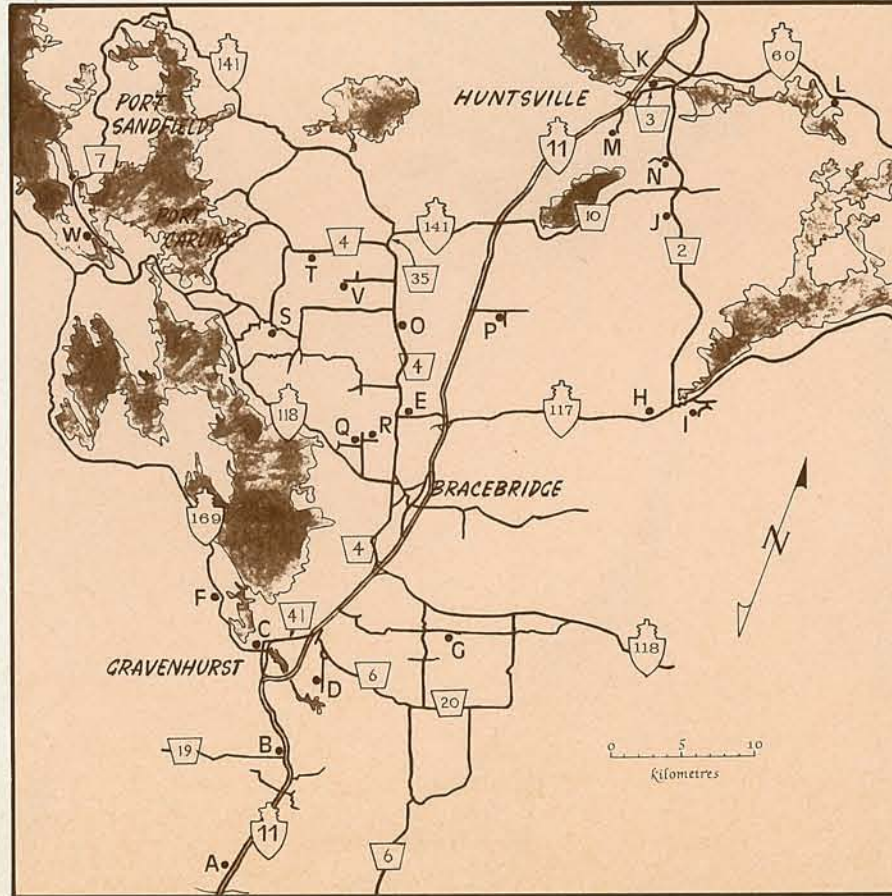
C. Frank C. Johnston, Watercolourist and Fine Art Photo Lithographer. Watercolours and reproductions of Ontario available. From Post Office Corner in Gravenhurst, West on Bay St. (Hwy. 169) one block, then north one block to Hughson St. We are number 235. Box 1683, Gravenhurst, P0C 1G0 (705) 687-4472
Hours: By appointment.

D. Michael Cleary paints beautifully detailed watercolours of the Canadian landscape. Both original paintings and signed, numbered reproductions are available. Take Doe Lake Rd. (Muskoka Rd. 6) east from Hwy. 11 for 1.5 km., south at Laycock Drive for 1.5 km. on west side of road. Box 1368, Gravenhurst, P0C 1G0, (705) 687-5264
Hours: May 24th to Thanksgiving, Fri. noon to 9 p.m., Sat. and Sun. noon to 6 p.m. or by appointment.

E. Richard Green invites you to view bronze semi-abstract sculptures in a sensual, figurative style, a contemporary yet classical expression of the artist's interaction with his models. His new studio is located 4.5 km. north of Bracebridge on Muskoka Road 4, turn east on High Falls Road for 0.5 km., north side of road. R.R. 2 Bracebridge, P0B 1C0, (705) 645-6509
Hours: Open by appointment.

F. Pine Lake Pottery: Mieke Martin offers a wide range of handthrown and one-of-a-kind pieces in stoneware and porcelain. Mieke's Gallery and Studio are located on Hwy. 169, 6 km. north of Gravenhurst and 22 km. south of Bala. R.R. 2, Gravenhurst, P0C 1G0, (705) 687-2072
Hours: Summer, Wed. - Sun. 10 a.m. to 4 p.m.; Winter Mon. to Fri. 10 a.m. to 4 p.m.

G. Doug Dunford shows super realistic acrylic paintings, watercolour and pencil drawings that depict the rural and cottage life of Muskoka. From Hwy. 11, 6 km. east on Hwy. 118, 2 km. south on Germania Rd. and 2 km. east on the Old Draper Road. General Delivery (705) 645-9369
Hours: By appointment.



On leave of absence from the tour this year:
Roma Hopkins, June Knapp and Harold Wright.



H. Ken and Gloria Hoeght, Earth Park. Stoneware and porcelain is formed into unique, functional pieces using various Japanese techniques, giving warm and earthy tones. Located 2 km. west of Baysville on the north side of Hwy. 117. General Delivery, Baysville, P0B 1A0, (705) 767-3781.
Hours: Daily 10 a.m. to 5 p.m.

I. Robert Gause, Visual Artist, is exhibiting original waterscape paintings in oil, which explore the dynamic interplay of colour and shape in rock/water reflections as seen from the viewpoint of a canoeist gliding past rocky northern shorelines. Take Hwy. 117 east 1000 meters past the bridge at Baysville, turn right on to Dickie Lake Road, follow the signs in 4 km. from Baysville. Lot 75A Dickie Lake, Box 16 Baysville, Ont., P0B 1A0 (705) 767-3143.
Hours: By appointment.

J. Rick Vail, Newholm Pottery. Subtle pastel hues, warm earthy tones distinguish the delicate porcelain and stoneware to be found at this woodland studio, located on the west side of Muskoka Rd. 2. 14 km. north of Baysville, 9.5 km. south of Huntsville. R.R. 2, Huntsville, P0A 1K0, (705) 789-9356.
Hours: Showroom usually open or by appointment.

K. Charles Knapp uses exciting sheets of stained glass to render his original designs into windows, lamps and sculptural pieces. A collection of his lamp designs has recently been published. From Hwy. 11 exit Muskoka Rd. 3 east (Main St.) 1.3 km. or 1.4 km. from Downtown Huntsville on the north side of the road. 138 Main Street West, Huntsville, P0A 1K0 (705) 789-8291.
Hours: 10 a.m. to 5 p.m. Tues. to Sat.

L. Marina Fricke shows her unique technique of "Stone Sculpture" in her Maple Art Studio. Located at Hillside, 12 km. east of Huntsville, 10 km. west of Dwight on Hwy. 60. Please look for our sign "Maple Art Studio". R.R. 4, Huntsville, P0A 1K0 (705) 635-1378.
Hours: By appointment or chance all year.

M. Eric Lindgren offers a variety of works in stoneware; from ovenware, tableware, vases and planters, to sinks and murals. **Cathy Lindgren** shows a selection of handpainted silk wall hangings at their studio just south of Huntsville off Hwy. 11. Turn east on Lindgren Road for 2 km. General Delivery, Huntsville P0A 1K0 (705) 789-2843.
Hours: Summer 10 - 4 everyday
Winter 10 - 4 Wed. to Sat.

N. Wehrmann Furniture, Dirk Wehrmann opens his shop and showroom. View pine and hardwood furnishings, lighting and gifts, all items made on the premises using local woods. Located 6 km. south of Huntsville on Muskoka Rd. 2, turn at Markles Rd. Box 123, R.R. 2, Huntsville, P0A 1K0, (705) 789-7963.
Hours: 10 - 4 Mon. to Sat.

O. Brian and Kathy Ashby, artists in glass. Visit our studios, where Kathy will be creating delicate glass miniatures at the torch and Brian creates unique art glass in his hot glass studio. 11 km. north of Bracebridge on Muskoka Road 4, East side; or 11 km. south of Hwy. 141-35 Junction. R.R. 6, Bracebridge, P0B 1C0, (705) 385-2989.
Hours: Showroom usually open or by appointment.

P. Janice Barnes. Come and watch the artist work in her old school house creating one of her unique naive paintings of the Muskoka scene. East off Hwy. 11, 12 km. north of Bracebridge, 2 km. down Stephenson Road 1, R.R. 1, Port Sydney, P0B 1L0, (705) 385-3020.
Hours: Open for tour only.

Q. John Partridge, Studio Potter is presenting in the showroom a quality selection of finished utilitarian and sculptural ware: In the studio, wheel-thrown and hand-built work in progress. Located 2 km. west of Bracebridge on Hwy. 118 to South Monck Drive, north 2 kms. turn left to first laneway. R.R. 1, Bracebridge, P0B 1C0, (705) 645-8618.
Hours: June to Sept.: Wed. to Sat. 10 a.m. to 5 p.m.; Oct. to May: by chance or appointment.

R. Lyette Beaulac Fibre Company. Lyette Beaulac is showing artistic clothing in silk, cotton and fine fibres, using techniques of spinning, dyeing and weaving. Located 2 km. west of Bracebridge on Hwy. 118 to South Monck Drive, north 2 km. and turn right, first driveway on left side. R.R. 1, Bracebridge, P0B 1C0, (705) 695-5554.
Hours: June to Sept.; Mon. to Sat., 10 a.m. to 4 p.m.; Oct. to May: by chance or appointment.

S. Gerhard Balzerreit, Potter. Contemporary, unique, one of a kind, functional and sculptural pieces in porcelain. From Bracebridge, take Hwy. 118 west 12 km. to Hewlitt Road (near Milford Bay), and follow signs 4.4 km. to the studio. R.R. 6, Bracebridge, P0B 1C0, (705) 764-8088.
Hours: By appointment.

T. Norman Golledge. Exciting water colours and acrylics of people, places and faces. A superb colourist. On Windermere Road (Musk. Rd. 4) 5.3 km. west of junction with Muskoka Road 35. R.R. 2, Utterson, Box 178, Bracebridge, P0B 1C0; Phone: new listing.
Hours: By appointment.

V. John E. O'Byrne, A.O.C.A. fine wood working and design. Visitors will not see an inventory of stock goods but will, however, have access to current speculative work, photo portfolio of past projects and an opportunity to discuss any personal requirements they may have. 20 km. north from Bracebridge on Muskoka Road 4 to Camel Lake Road, west 3.5 km. to last lane on south side. R.R. 6, Bracebridge, P0B 1C0, (705) 385-2196.
Hours: By appointment.

W. Hermitage. Merv Hopkins. Our spacious school house showroom features fine wood working in native Muskoka woods. On Muskoka Road 7, 1 km. west of Port Sandfield Bridge, a few metres west of the Elgin House Road corner. R.R. 2, Port Carling, P0B 1N0, (705) 765-5863.
Hours: 9 to 4 May to October; Sept. to April by appointment.

Ontario's original studio tour, organized and funded exclusively by the participating artists.