

O. GARDENSCAPES BY JIM BIRD

Jim offers a selection of birdbaths, planters and sconces made from hypertufa; a mixture of sand, peat moss and cement. Each piece is cast from a handmade mold. Jim's unique line of mosquito-proof fountains has delighted many. You are invited to come take a stroll and admire the professionally displayed pieces throughout a large garden setting. 705-645-6051



23 South Muskoka Dr
Bracebridge P1L 1M4

Take Manitoba St north to the 2nd street past Hwy 118, turn right on Liddard St, which becomes South Muskoka Dr, studio is on the right

Open By Appointment

P. D. A. DUNFORD

Realism painter in oils, acrylics and watercolours of Muskoka waterscapes. Commissions accepted. 705-645-3510 ddunford1@cogeco.ca



1121 Manitoba St RR 2
Bracebridge P1L 1W9

4 km north of
Bracebridge on
Muskoka Rd 4

Open By Appointment

Q. ASHBY GLASS STUDIOS EST 1976

Brian Ashby—Expressive, hand blown glass, original sculptures, and colourful vessels made using centuries old techniques in the hot glass studio. Also original paintings. Kathy Ashby—Exquisite glass miniature sculptures created at the hot torch (lampworking). Glass Beads! Custom orders upon request. Something for everyone. 705-385-2989 ashby@surenet.net

2415 Manitoba St RR 6 Stn Main
Bracebridge P1L 1X4

11 km north of Bracebridge on
Manitoba St (formerly Muskoka
Rd 4) or 11 km south of Hwy 141
& Hwy 35 junction

Open By Chance or Appointment



R. ED NOVAK

Fine Art—acrylics and watercolours, Ed is known for his richly detailed Muskoka landscapes as well as his still lifes of fruits, flowers and especially glass objects. Prints available. Commissions accepted. www.ednovak.com 705-385-2438 ednovak@ednovak.com

1261 Windermere Rd RR 2
Utterson P0B 1M0

From Bracebridge follow Muskoka Rd 4
for 16 km north, turn left at Windermere
Rd, follow for 2.2 km to studio

Open By Chance or Appointment



S. LINDA MCDERMOTT

Torr Lith Stained Glass. Linda captures the spirit of landscape painting in the medium of stained glass with custom designed work that is original and unique to each commission. Also represented are traditional to modern styles and custom-made lamps. www.torrlithstainedglass.com 705-385-0690

lmcdermott@torrlithstainedglass.com



1020 Skeleton Lake Rd 2 RR 1
Utterson P0B 1M0

Traveling west on Hwy 141, 5 km from
Muskoka Rd 35 junction, continue west
and turn right at Skeleton Lake Rd 2 first
drive on the right

Open By Chance or Appointment

T. DON THUR

Knots and Burls to Bowls. Presenting for 2006, works crafted from locally discovered wood circa 6100 BC. www.knotsburls.com 705-385-3454 cell:705-787-5190 knotsburls@aol.com

3077 Old Muskoka Rd
Utterson P0B 1M0

Follow Hwy 11 to
Stephenson Rd 4, 1 km
west to Old Muskoka Rd,
then left (south) 1 km OR
Hwy 141 to Utterson post
office, 3 km south to studio

Open By Chance or
Appointment



U. LINDGREN POTTERY

Eric Lindgren - stoneware and raku pottery: sculptural and decorative pieces in addition to a line of functional pots, including square dinnerware and sinks, richly finished with an extensive selection of glazes. www.lindgrenpottery.com 705-789-2843 lindgren@muskoka.com



320 Lindgren Rd E
Huntsville P1H 1Y6

Just south of Huntsville off Hwy 11, turn
east on Lindgren Rd for 2 km

Open Jun - Sep Daily 10 - 4
Closed Fri Sep 22nd
Oct - May Tue - Sat 10 - 4 or By Appointment

V. KATE SANTOS

Vivid, joyful work that expresses gratitude. Originals in wax or acrylic. Reproductions and art cards. Downtown Huntsville; a sky-lit gallery with ample seating and a restful garden. www.katesantos.com 705-789-8435 katacolor@hotmail.com



28 Florence St E
Huntsville P1H 1P8

Turn west off Brunel Road
at Huntsville High School
on to Florence St E

Open By Chance or
Appointment

W. MARNI MARTIN

Fibre Studio. Discover how Marni hand-dyes fibres transforming them on her loom into brilliant textural tapestries and elegant sensual scarves and wraps. www.surenet.net/~fibrearts 705-788-3263 fibrearts@surenet.net

725 N Mary Lk Rd
Huntsville P1H 1S4

From Huntsville or Baysville,
take Muskoka Rd 2 (Brunel
Rd) to N Mary Lk Rd, follow
for 1.5 km

Open By Chance or
Appointment



X. BRENDA WAINMAN GOULET

Brenda's scenic lakeside gallery and studio showcase her distinctive bronze on stone landscapes and fanciful figures. This year Brenda has created an intriguing series of sculptures she calls "Testing My Metal" where she pushes the limits of her material, her imagination and her technique. Visit her studio and discover how the artist transforms idea into bronze. www.brendawainmangoulet.com 705-635-1996 bronzart@vianet.on.ca



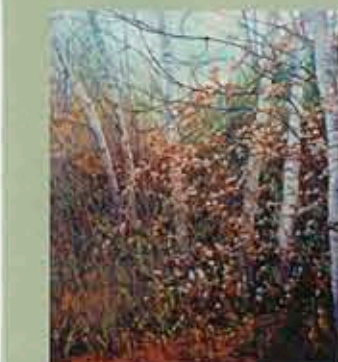
1071 East Walker Lk Dr RR 4
Huntsville P1H 2J6

12 km east of Huntsville along Hwy 60
turn left onto Limberlost Rd, continue 3 km to Upper Walker Lk Rd, turn
left, then right at stop sign to 1071

Open By Chance or Appointment

Y. CATHERINE O'MARA

Catherine paints the wilds of Algonquin using the ancient medium of egg tempera. Her paintings have a brilliant, luminous quality and an intimate "in the woods" feeling. www.gallery.catherineomara.com 705-635-2093



catherine_omara@yahoo.ca

1968 Limberlost Rd RR 4
Huntsville P1H 2J6

12 km east of Huntsville along Hwy
60 turn left at Limberlost Rd,
continue 10 km to studio

Open By Appointment

Z. JANET STAHL-FRASER

Tapawingo Studio. Janet's love of exploring media is apparent in the diversity of materials and techniques she employs. Here you will find pastel, acrylic and encaustic paintings, woodcuts, etchings, monotypes, mixed media and art cards, all displayed in a cozy log setting. www.tapawingostudio.on.ca 705-767-3594 janet@tapawingostudio.on.ca

2781 Hwy 117 Box 125
Baysville P0B 1A0

1 km east of Baysville on Hwy
117 at 2781 with sign posted on
north side 200 ft from Birch
Haven Rd

Open May - Oct 11 - 5
Most Days Call To Be Sure
Nov - Apr By Appointment



XX. JOHN MURDEN

A professional artist in watercolour, acrylics and mixed media. John is recognized for his historical landscapes, Muskoka scenes, paintings of cottages and antique boats. His versatility and use of strong colour are evident in his wide range of styles and techniques. You are welcome to view John's art online at www.murden.com 705-767-2578 or 877-687-3367 john@murden.com



1002 Earth Park Rd Box 141
Baysville P0B 1A0

2 km west of Baysville on Hwy 117
at Earth Park Rd

Open May - Oct Tue & Thu - Sun 10 - 3
Please Call Ahead
Nov - Apr By Appointment

YY. STAN W. TAIT

Stan W. Tait has been creating sterling silver and gold jewellery for over 32 years. A visit to his studio in the heart of Muskoka will inspire you with designs that are classic and contemporary yet uniquely refreshing! Enjoy the complete selection of his renowned designs including the well known Muskoka Pine Tree Collection and his nationally recognized "Angel Pendant" including the New Pink Cancer Support Angel.



www.theangelpendant.com 705-646-1454
stantait@theangelpendant.com

1013 Carlee Rd Box 105
Bracebridge P1L 1T5

Exit Hwy 11 at Hwy 117 east,
first left is Carlee Rd
Open Jul - Aug Mon - Sat 11 - 4
Sep - Jun By Chance or Appointment

ZZ. ARTIFEX COPPERSMITHING & STAINED GLASS INC.

Richard Ellard - Coppersmith Christine Ellard - Glass Artist. A unique collection of stained glass, fused glass, and copper. Inspiring works using traditional techniques and new innovative designs. Specializing in custom work with a focus on "Art in Architecture." www.coppersmithing.ca 705-646-1394

1070 Putbrook Rd RR 5
Bracebridge P1L 1X3

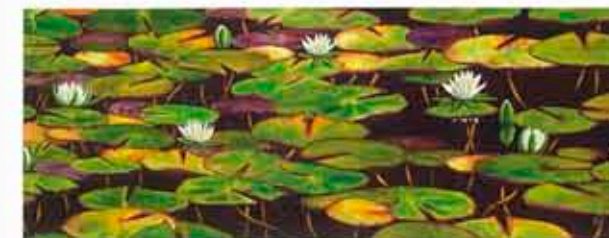
From Hwy 11 use
Taylor Rd or Cedar Ln
Exit to Cedar Ln and
then 10 km east on
Fraserburg Rd to
Putbrook Rd

Open By Appointment



MUSKOKA

AUTUMN STUDIO TOUR 2006



CANADA'S ORIGINAL STUDIO TOUR



SEPTEMBER 23 & 24 10 AM - 6 PM

28TH ANNUAL

WWW.MUSKOKA.COM/TOUR

YEAR-ROUND STUDIO GUIDE

A. PENNY VARNEY
Original custom designs in silver, gold, niobium and other materials. Commissions and repairs accepted. 705-687-2071 varney@muskoka.com

1024 Simpson Rd Box 472 Gravenhurst P1P 1T8

Studio is located on Simpson Rd, 4 km north of Gravenhurst off Bethune Dr (District Rd 41)



Open By Appointment

B. MEDIEVAL STONEWARE POTTERY
Johnathan Bullock creates meticulously hand-carved functional and sculptural stoneware, richly glazed in jewel tones and bronze accents. Whimsical garden creatures, unique dinnerware, goblets, fountains and one of a kind murals inspired by Muskoka landscapes are created with a medieval flair. 705-687-3936



210 First St S Gravenhurst P1P 1H5

Downtown Gravenhurst 1 street east of the Opera House just south of the Independent Grocer (corner of First St and Royal St) Look for the big blue "Pottery Studio" sign

Open May - Dec Tue - Sun 10 - 5
Jan - Apr By Appointment

C. LINDA HRYNYK POTTERY
Functional, sculptural, wheel-thrown stoneware and slab work fabulous for home, cottage and gifts. A full line of dinnerware is also available. 705-687-6521

310 North St Box 735 Gravenhurst P1P 1V1

Travel 2 km west of Gravenhurst on Hwy 169 to North St (just past the Muskoka Wharf development)

Open Jun - Sep Wed - Sat 10 - 4
Oct - May By Appointment



D. BONNIE BEWS
Bonnie Bewes paints in the art form of *Hinterglas*, a German technique of "painting on the reverse side of the glass." The combination of graphite and watercolour results in soft, delicate lines and translucent colours. Botanical and forest passages offer an intriguing platform for Bonnie's whimsical imagination to take fanciful flight. Come stroll through her garden to see how she draws upon the unexpected world of fairies, frogs and dragonflies. Garden murals now on display! www.bonniebewes.com 705-684-8050 hinterglas@bonniebewes.com



1012 Wares Rd Walkers Point Gravenhurst P1P 1R2

Off Hwy 169 (between Bala & Gravenhurst) turn at Walkers Point Rd, follow for 2 km and turn right on Wares Rd the studio is on the right

Open Jun - Oct 10 - 5
Nov - May By Chance or Appointment

E. LYNN NORRIS
A wildlife artist with a difference, Lynn's art has depth and dimension, literally. Each piece is done on all natural, kiln dried, bark-framed basswood. By using wood as her canvas, she is able to hand carve the base on which her subject is presented. Once the image has been carved out, she brings it to life with paint. Creating each image around the wood's own grain and knots makes each piece truly one of a kind. www.studiooflynnnorris.ca 705-762-2154 info@studiooflynnnorris.ca



1038 Kitchener St Box 616 Bala POC 1A0

Hwy 169 to Bala, turn onto Gordon St (at the LCBO) and follow to Kitchener St, turn left, studio is on the left

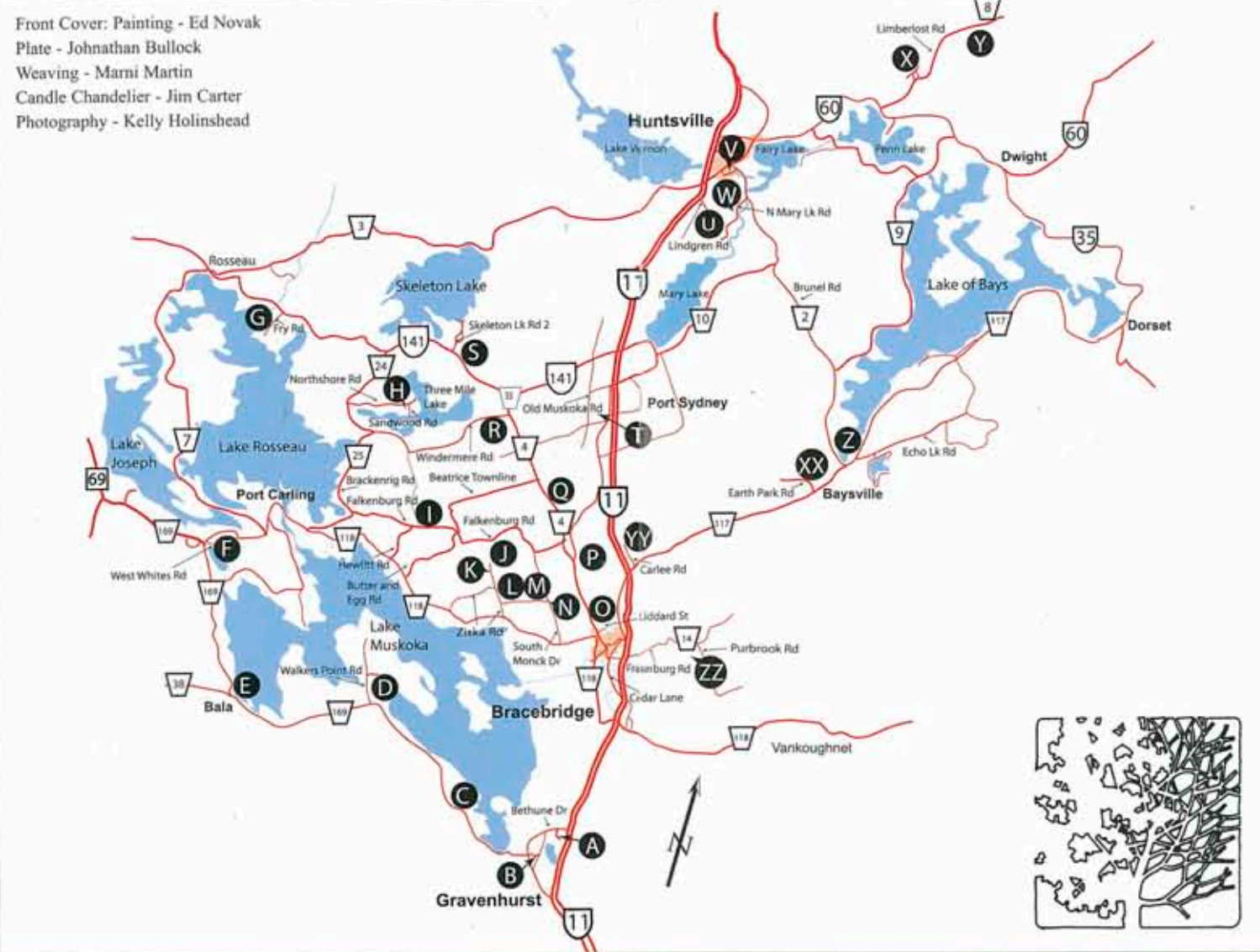
Open By Chance or Appointment

F. ELIZABETH ROBINSON
Elizabeth reveals her unique creations from her home and studio located in the old Glenwood Chapel in Glen Orchard. Grab the kids and company and come see the hand-built sculptures hidden in the trees and gardens. Great gifts for the cottage and garden. 705-765-7729 onegirltwohands@sympatico.ca

1021 West Whites Rd Port Carling P0B 1J0

Off Hwy 118 near Hwy 169 intersection watch for the blue Ontario hwy signs

Open Jul - Sep 10 - 5 Sun & Wed By Chance or Appointment
Oct - Jun By Chance or Appointment



G. BILL HUNNISETT
Woodcarver - Stonecarver. Wildlife, figures and fantasy pieces. Specialty carving driftwood and roots; outdoor stone sculptures. 705-732-6323

1040 Fry Rd RR 1 Utterson P0B 1M0

West on Hwy 141, turn left at Fry Rd, 5 km past Bent River and 6 km from town of Rosseau

Open By Appointment



H. LINDA WRIGHT
Northshore Pottery. Visit Linda's studio and enjoy a presentation of bold, colourful, functional pottery. There is a wide selection of mugs, bowls, serving platters, dinnerware and much more, available in five colour combinations. All to suit city or country décor. 705-769-2352 lindawright_30@sympatico.ca



1056 Sandwood Rd Box 176 Windermere P0B 1P0

West on Hwy 141, turn left on Hwy 24, go 4.5 km, turn left on Northshore Rd, go 4.5 km, turn right on Sandwood Rd, studio is second driveway on right

Open Jun - Oct Tue - Sun 10 - 4
Nov - May By Chance or Appointment

I. SIMON BISLEY
Hand Blown Glass - Contemporary, functional and fun, watch as Simon demonstrates the art of glass blowing, creating vibrantly coloured goblets, perfume bottles, paperweights, friendship balls, plates and more. 705-764-1376 bisglass@muskoka.com



1888 Falkenburg Rd RR 6 Bracebridge P1L 1X4

Hwy 118 W (Milford Bay) north on Hewlitt Rd, right on Falkenburg Rd, 2 km on the left

Open Tue - Sun 10 - 6

J. JIM CARTER
Artist Blacksmith Inc. Old methods, as well as new, are combined to produce unique functional ironwork for the home and garden. www.muskokablacksmith.ca 705-764-1445

1435 Falkenburg Rd Bracebridge P1L 1X4

From Bracebridge take Manitoba St north 6.5 km, turn left on Falkenburg Rd and go 6.5 km OR at Milford Bay, take Butter And Egg Rd north 4.8 km, then right 2.3 km to studio

Open By Chance or Appointment



K. LORRAINE EIDLITZ
When we come to a state of grace, love becomes a creative response. In this way, positive energy expands to fill negative space. Lorraine Eidlitz seeks to provide you with catalysts for your well-being with her explorations in pottery, sculpture, painting and mixed media. 705-646-1944



1101 Baldwin Rd RR 1 Bracebridge P1L 1W8

From Bracebridge take Hwy 118 W 4 km to Ziska Rd, go north 3 km to junction, continue straight through 1 km to 1101 Baldwin Rd

Open Jul - Aug Wed - Sat 10 - 5 or By Appointment

L. WENDY MOSES
The Alexandra Luke Gallery. Abstract expressionist paintings - bright, bold and beautiful - awaiting your arrival, to awaken and enhance your imagination, in a charming countryside setting. 705-645-2093 wmoses@muskoka.com



1086 Partridge Ln Bracebridge P1L 1W8

From Bracebridge, take Hwy 118 west, exit Ziska Rd, turn right on to Partridge Ln and follow signs

Open Jul - Aug 10 - 5
Please call ahead
Sep - Jun By Chance or Appointment

M. JON PARTRIDGE POTTERY LTD. EST 1973
Jon Partridge designs and creates murals, fountains, framed clay paintings, sculptural vessels and functional pottery using stoneware clay. Suzann Partridge is a multimedia artist specializing in sculptures for the garden and home as well as in figurative drawings. 705-645-8618 pottery@muskoka.com



1016 Partridge Ln RR 1 Bracebridge P1L 1W8

From Bracebridge, take Hwy 118 west 2 km to South Monck Dr, north 2 km to Partridge Ln, turn left to the first lane on the right

Open Jun - Aug Wed - Sat 10 - 5 or By Appointment



N. STEPHEN SPRAGUE
Designer - Maker of Fine Furniture. The showroom features post and rung chairs in the Appalachian tradition, dining tables and imaginative home accents. An extensive inventory of choice native hardwoods collected over thirty years provides inspiration for personal commissions. Visitors are always welcome to explore design possibilities, view work in progress, or take a ride in a rocker! 705-645-6697 sprague@sympatico.ca

1150 South Monck Dr Bracebridge P1L 1W8

From Hwy 118, 1 km west of Bracebridge, to South Monck Dr, go north 1.5 km, studio is on the right

Open By Chance or Appointment

